

# ROV

## Robotic grain and supplement feeder

- Travels on a suspended rail which can be easily adapted to most feed alleys
- Distributes grain, supplements and minerals without human intervention
- Provides up to 8 dietary supplements: concentrates, minerals, cubes and powders
- Low energy consumption : operates on two 12 volts batteries
- NEW! Our ROV can now be powered continuously by using an electrified rail! (offered in option)



The ROV is a made-to-order robot manufactured according to each producer needs. Some features are optional. Characteristics, specifications and dimensions are subject to change without notice. Robots already in operation can be different as shown.

## PLC & controls :

### Touch screen



- Wide screen, excellent visibility and precise reading
- Clear instructions
- Industrial console resistant to dust and humidity

### Industrial PLC



- Complies with internationally recognized quality standards
- Superior service life and reliability

### Rovibec series 5000 software

- Directs the robot to loading points (reserves, auger)
- Directs rail switches activated by mechanical actuator
- Distributes up to 16 different recipes to 200 cows
- Adjusts given ration accordingly to lactation cycle
- Automatically loads up to 4 different feed
- Individually distributes supplements, grain and minerals
- Manages the individual animal consumed quantities
- Calculates the available feed quantities in silos



### Wireless communication ensemble

- Allows data exchange between the robot and a desktop computer or any Smartphone

cell - iPad - Tablet PC (option available for some stables; special conditions apply)



# Supplement , grain, and mineral distribution

## Up to 8 compartments for food supplements

- Distributes supplements individually to each cow
- Can contribute to increase milk value components

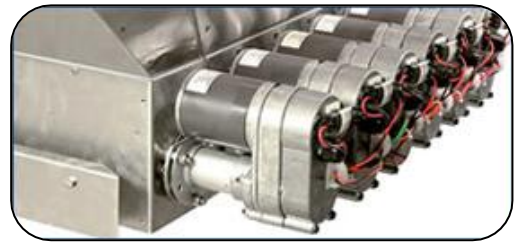


## 4 different supplement auger models available

- Optimized volume distribution for each type of supplement (grains, concentrate, cubes, mineral powder)

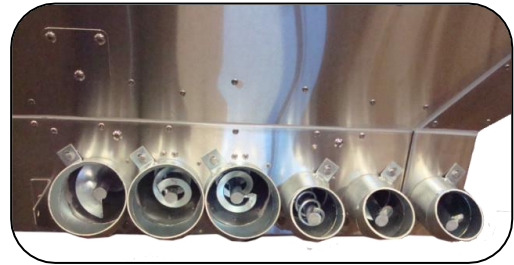
## 24 VDC motor operated augers

- Precise volumetric distribution
- Quiet operation
- Easy calibration, quick setting of discharge rate - helps control and reduce feed costs



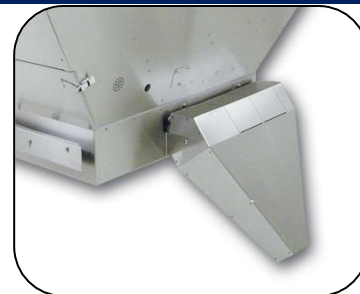
## Simultaneous auger operation

- Short stopping time at each cow
- Homogeneous mix reducing sorting and cow refusal



## Special discharge spouts

- Prevent spills
- Precise serving



## Adjustable high level sensors

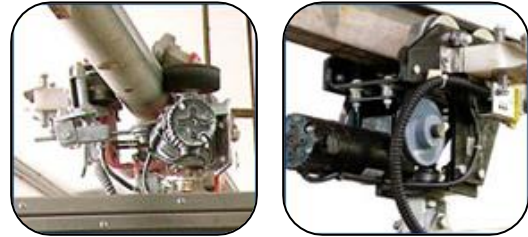
- Automatic loading of supplements that are used in large quantities (up to 4 sensors available)



# Rail and drive

## Rail & drive

- Trolley for galvanized round rail (O.D.  $\varnothing$  3-1/2" – 88mm)
- Trolley especially designed for I-beam rails



### Traction wheel with adjustable quick-release tensioner (round rail) :

- Ensures maximum adhesion to the rail
- Allows fast movement
- Compatible with the rails with a low slope (0-4%)

Simplifies the robot installation into existing barns

Replaces competing grain robots without changing rail

In a new building, allows to choose the most economical rail type for best fit with building structure

## Short wheel base trolleys

- For narrow turns in confined alleys

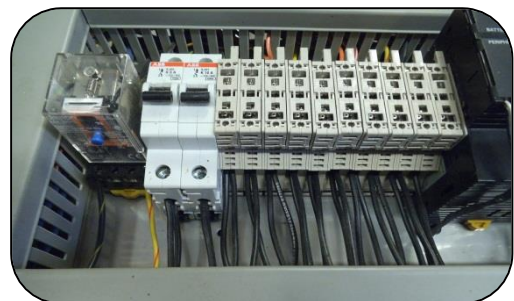


# Design and safety

## Durable electronic and electromechanical components :

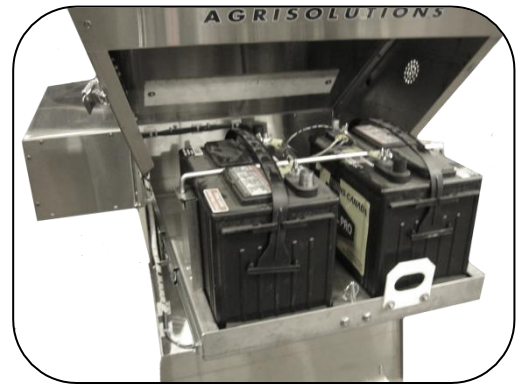
- Efficiency in hard environment (dust, moisture, corrosive feed)
- Liability and durability
- Fast, easy and low cost maintenance

**NEW! Our ROV can now be operated with electrified rail for continuous feeding!**



## Battery drawer tray

- Easy access, for simple and fast inspection and maintenance



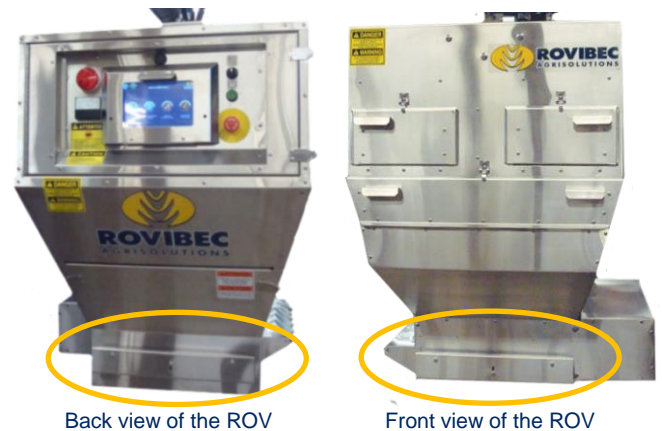
## Compartments, stainless steel panels / stainless rivet assembly

- Assembly with rivets such as aeronautical standards giving a much higher strength
- Corrosion resistant
- Choc and scratches resistant
- Good appearance
- Increased lifetime than regular or galvanized steel



## Front and rear bumpers

- Instant stop if the robot hits an obstacle



## Shocker optional , where laws permit this device

- Keeps the cows at a safe distance of the Robot
- Provides feeding training to the new cows in short time

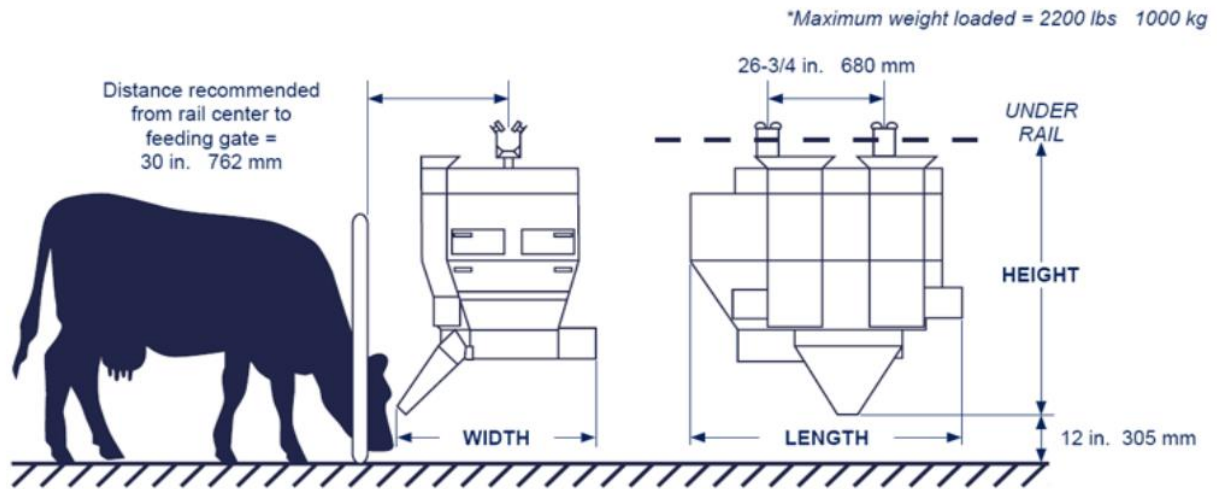




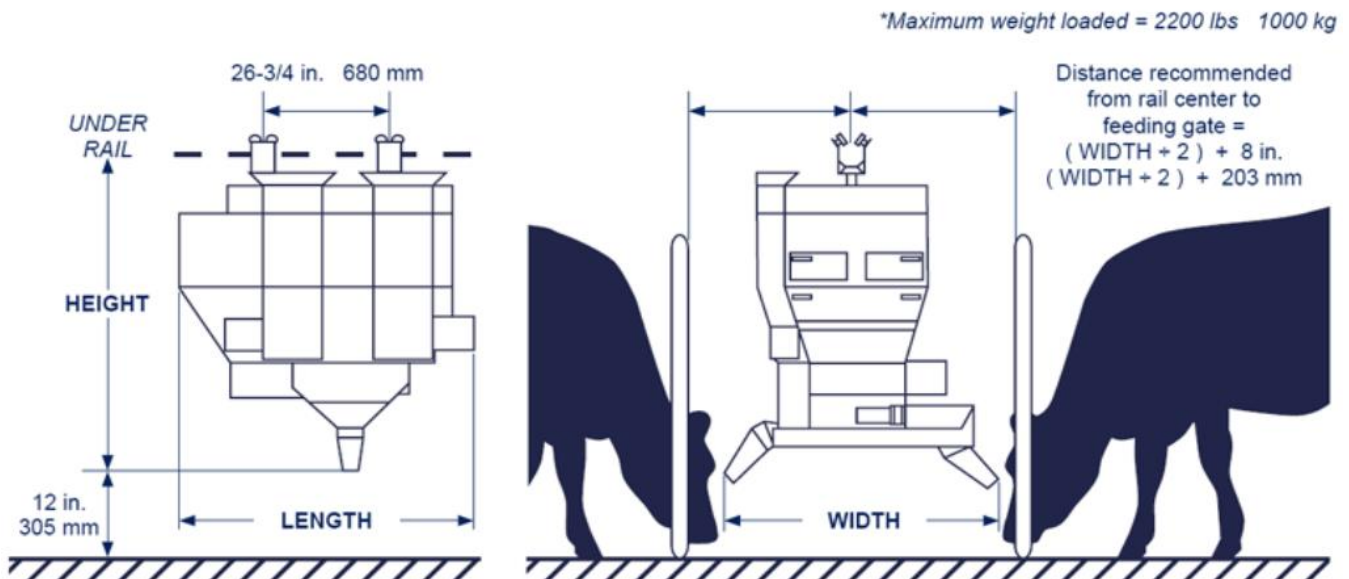
## Dimensions

Model	Length		Width*		Height		Tare weight*	
	inches	mm	inches	mm	inches	mm	lb	kg
ROV with one side distribution	63	1600	43	1092	70	1778	700	318
ROV with two sides distribution (four available models)	63	1600	43 to 76	1092 to 1930	78	1981	800	363

### ROV with one side distribution DIAGRAM



### ROV with two sides distribution DIAGRAM



# Compartment capacity

Compartment number	Capacity	
	Cu. Ft.	Litres
Number 1 Grains - supplements	9.5	269
Number 2 Grains - supplements	7	198
Number 3 Grains - supplements	3.6	102
Number 4 Mineral cube - powder	1	28
Number 5 Mineral cube - powder	1	28
Number 6 Mineral cube - powder	1	28
Number 7 Mineral cube - powder	1 or 2	28 or 56
Number 8 Mineral cube - powder	1	28

