

HD RESERVE

G/B

GREEN BOX


ROVIBEC
AGRISOLUTIONS

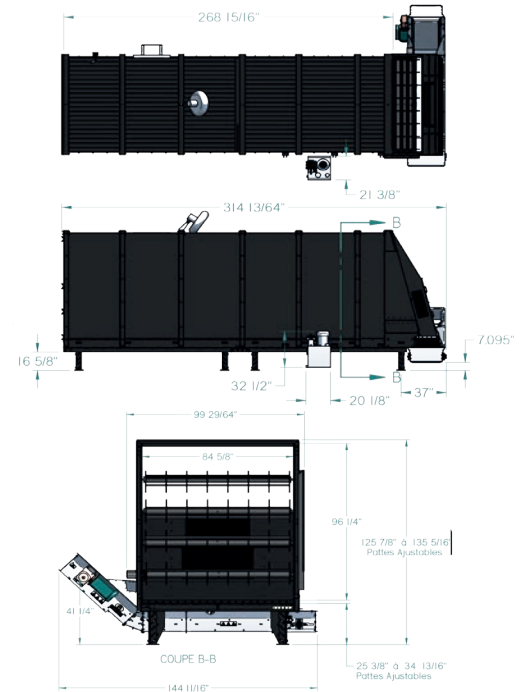
Your dealer

DESCRIPTION

The **GreenBox** reserve is a new generation of storage, developed especially for intensive and long-lasting use. Its application? In an automated **recycled bedding** system.

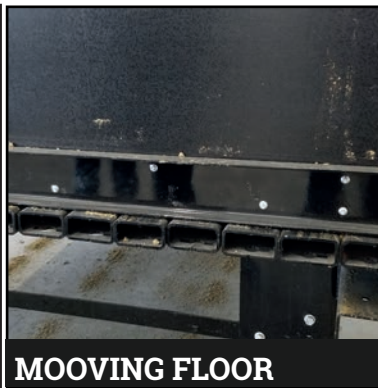
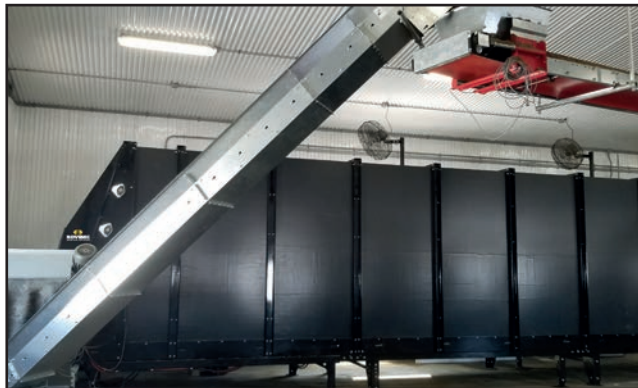
What makes it special?

- its solid **structure**
- its head with 4 adapted beaters
- its **moving floor** with slats
- its simple and efficient **hydraulic system**
- its load capacity from **650cu.ft to 1950 cu.ft**
- its discharge chain conveyor with a **stainless steel chain**
- its compatibility with the Rovibec distribution system: Rovicar, conveyors, Agriration 4.0 or even the **GreenBot** - a connected bedding robot



PENDING PATENT

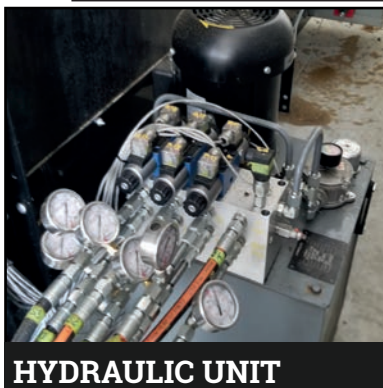
DETAILS



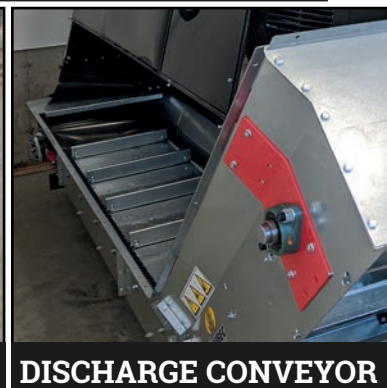
MOVING FLOOR



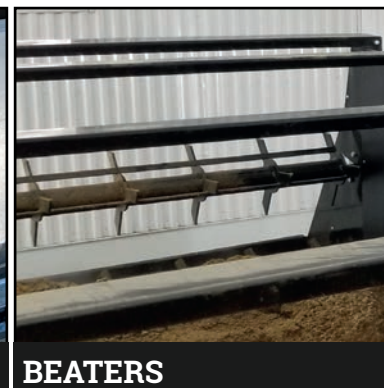
LOAD CAPACITY



HYDRAULIC UNIT



DISCHARGE CONVEYOR



BEATERS



COMPATIBILITY

TECHNICAL DATA

MOTORIZATION	Hydraulic unit with 5HP motor, 240v 1 phase or 600v 3 phases
STRUCTURE	Powder coated steel, walls in , adjustable legs
CAPACITY	Capacity from 650 cu.ft, 1300 cu.ft or 1950cu.ft (18,4m ³ , 36,8m ³ or 55,2m ³)
DIMENSIONS (L X H)	Sections of 12', 24' or 36' long (3,6m, 7,3m or 10,9 m) 7' X 8' (2,13m X 2,44m)
INCLUSIONS	6' discharge conveyor (1,8m) 3HP 15:1, stainless steel chain Control panel, 240V ou 600V
OPTIONS	2 years warranty - parts and labor
WEIGHT	650 cu.ft capacity: 10 300 Lbs (4 672 Kg) 1300 cu.ft capacity: 14 600 Lbs (6 623 Kg) 1950 cu.ft capacity: 18 900 Lbs (8 573 Kg)